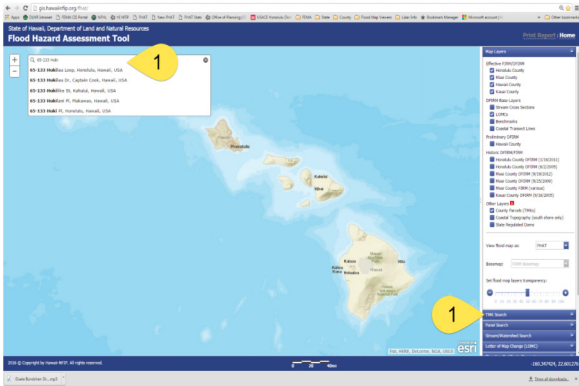


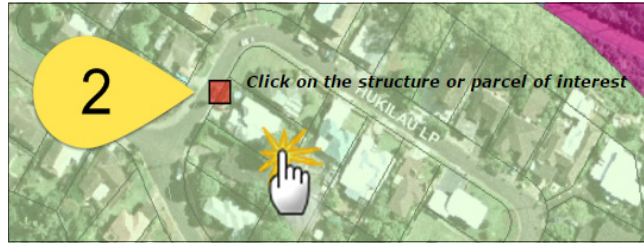
Am I in a Dam Evacuation Zone?

The State Dam Safety Program of the Department of Land and Natural Resources, Engineering Division, has provided state regulated dam location information on our Flood Hazard Assessment Tool (FHAT). In support of the County Emergency Response Agencies, county dam evacuation information is also included when conducting a parcel search.

To begin your search, use the FHAT by visiting www.hawaiiifip.org and click:



Search for a property by typing in the address in the search bar or Tax Map Key (TMK) number in the TMK Search window.

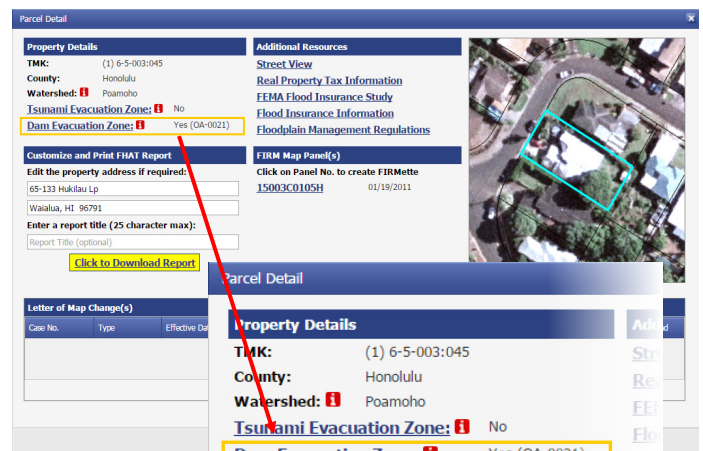
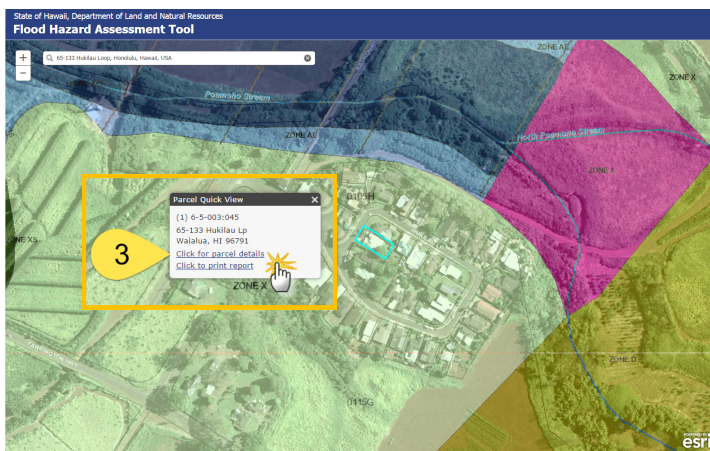


Click on the structure or parcel of interest. A "Parcel Quick View" window will open.

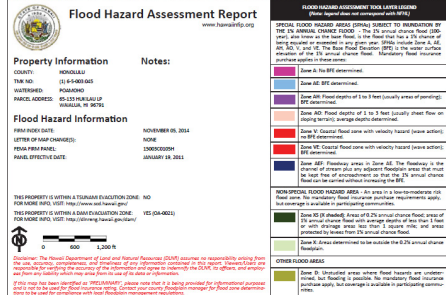
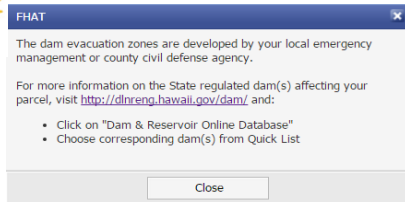


Click "parcel details" to display the property details, including the dam evacuation zone assessment.

Click on "print report" for a copy of the Flood Hazard Assessment Report, including dam evacuation assessment.



Flood Hazard Assessment Report



When the Dam Evacuation Zone assessment returns a "YES" response, this indicates that the subject parcel is within the limits of the county's dam evacuation zone. An evacuation zone is the potential area that may be evacuated in case there is reason to be concerned about a dam's safety. The State Dam Inventory ID number(s) will be displayed in parenthesis for the dam(s) that may pose a hazard to the subject parcel.

How Can I Learn More About the Dam?

To learn more about the specific dam(s) that pose a hazard to the subject parcel, visit the State Dam Safety Program website at:

<http://dlnreng.hawaii.gov/dam/> and click on the “Dam & Reservoir Online Database” button.

↓ A Online Dam Inventory System

4

To locate a specific dam of interest, pull down the “Dam Quick List” and search for the corresponding State Dam Inventory ID number affecting the parcel.



For further Dam Information, contact the **State Dam Safety Program** at (808) 587-0230.

For further Dam Evacuation Zone information contact the appropriate emergency response agency.

Hawaii County Civil Defense
(808) 935-0031

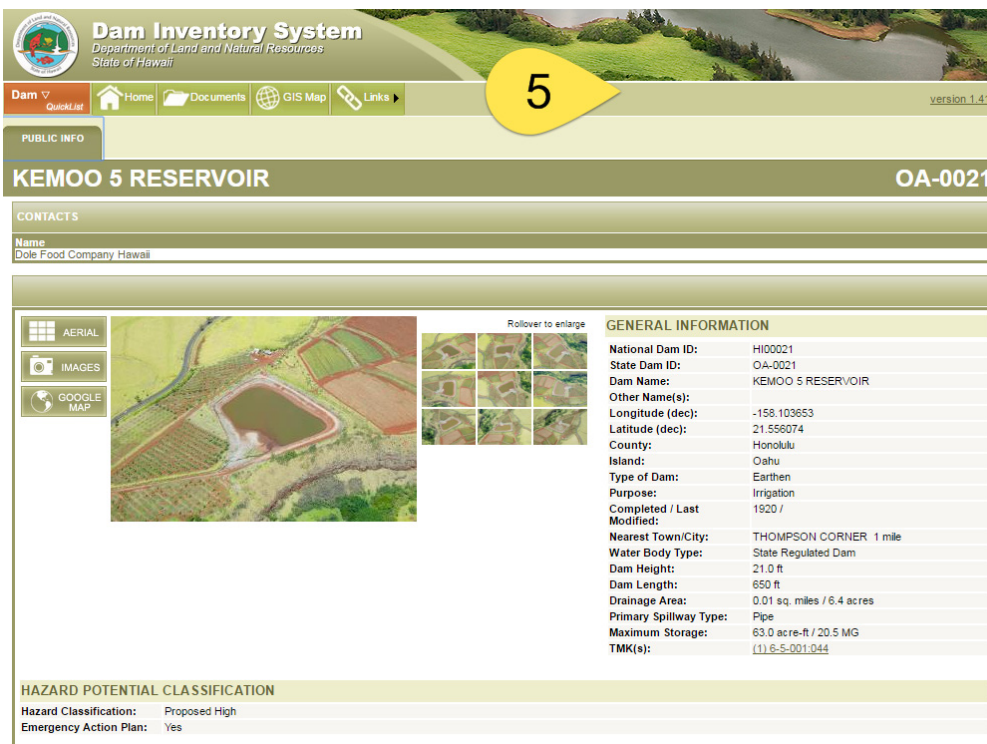
Maui County Emergency Management Agency
(808) 270-7285

Honolulu Department of Emergency Management
(808) 723-8960

Kauai Emergency Management Agency
(808) 241-1800

5

General information, aerial photos, dam specific photos, and other documents can be viewed and downloaded from this website.



This quick guide has been prepared by the Department of Land and Natural Resources, Engineering Division